

PACIFIC POWER GROUP

POWER GENERATION

Customer Solutions

CUSTOMER:

Clear Air Force Station

POWER SYSTEM:

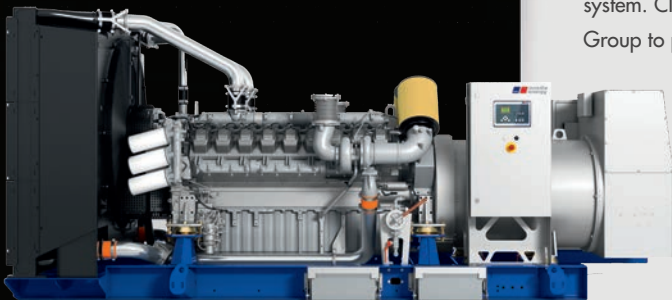
MTU Onsite Energy 1,250 kWE Generator

LOCATION:

Anderson, AK

DATE:

Summer 2015



MTU Onsite Energy Generator

Clear Support, No Matter the Conditions

Located 78 miles from Fairbanks in central Alaska, Clear Air Force Station's isolated location makes it the perfect place to survey for potential air borne threats to America's West Coast.

As an active station in command of early detection of foreign missiles and a hub for radar and satellite detection, Clear Air Force Station is an invaluable asset to the protection of the United States.

With a critical national defense mission, having a dependable backup power source to support the station's equipment is vital.

While upgrading the station's out-of-date coal-fired power plant to a modern system, the station opted to modernize their backup power generation system. Clear Air Force Station chose Pacific Power Group to provide a backup power solution to keep the station mission-ready.

As part of the station's plan, they will connect to the Alaskan transmission network and add a grid-power heat plant and backup power generator. With a power generation system from PPG and the larger modernization project, the station will save approximately \$2.6 million in fiscal year 2016 and \$1.9 million in each year after.

Providing reliable backup power during all weather conditions can be a challenge especially during the frigid Alaskan winters and hot summers which can threaten standby power reliability for the Station.

"In the event of an emergency or power outage, the power generation system our team supplied will keep Clear Air Force Station operating smoothly and allow our service men and women to continue their critical mission," said Travis Coffey, power generation director at Pacific Power Group.

As a solution to the challenge of extreme temperature, PPG's Power Generation division developed a complete backup power system that is outfitted to handle the extreme Alaskan weather conditions. PPG supplied an MTU Onsite Energy 1,250 kWE generator set that is housed in an Artic-rated, insulated enclosure with a subbase fuel tank. To ensure the instantaneous transition to utility power in the event of a power failure, PPG also included a switchgear that cuts generator start time to a minimum, keeping the station running even in the harshest conditions. ⚡