



PACIFIC POWER GROUP MARINE

Customer Solutions

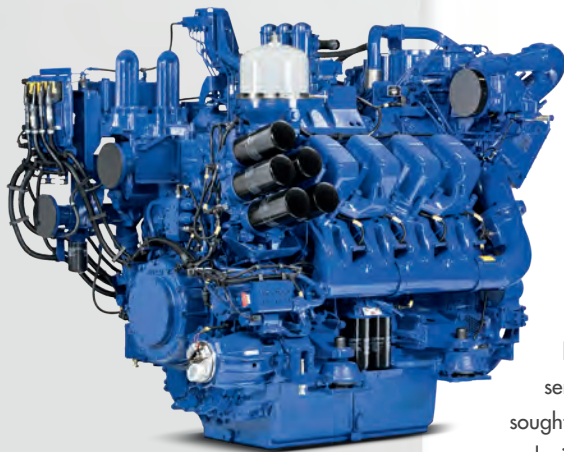
CUSTOMER:
SHAVER TRANSPORTATION

POWER SYSTEM:
MTU Series 4000

VESSEL TYPE:
Tug Boat

LOCATION:
Portland, OR

DATE:
Spring 2015



MTU Series 4000

Creative Repower Solution for Shaver's Umatilla Tug

Shaver Transportation has been in business for nearly 140 years, but when they came upon a transportation problem that needed to be solved, they came to Pacific Power Group Marine for a solution.

When changes to requirements were made for ship berthing tugs operating on the Columbia River and its tributaries, Shaver Transportation was faced with a serious problem:

One of their tugs, the *M/V Umatilla*, was rendered unusable for ship berthing and no longer able to produce revenue. As one of the most successful marine transportation companies operating on the Columbia River system since 1880, it was essential for the *Umatilla* to get back to work on the river.

Shaver turned to Pacific Power Group to revitalize their vessel and put it back into money-making service with a propulsion and performance upgrade. As the *Umatilla* is a veteran tug that has provided many years of dedicated service, Shaver and Pacific Power Group sought a cost-effective way to repower the vessel without brand new engines.

Recently, Pacific had sold new engines to repower a private yacht that was due for an overhaul – the owner had no use for the original MTU Series 4000 engines which had very low load factors and hours in use. Pacific began in depth research and calculations to see if the yacht engines could be converted for commercial tug use. A survey was performed on the 8V4000 M90 engines and Pacific determined that the engines could indeed be converted. A deal was made with the yacht owner to purchase the used engines and begin converting them from pleasure craft use to a suitable source of power for the *Umatilla* and its rigorous duties.

The expertise and creative problem solving provided by Pacific Power Group supplied the *Umatilla* with a power and bollard pull upgrade, while costing less than half the price of new engines

– a great value for Shaver Transportation that continues more than 30 years of business partnership between the two companies. 🔄